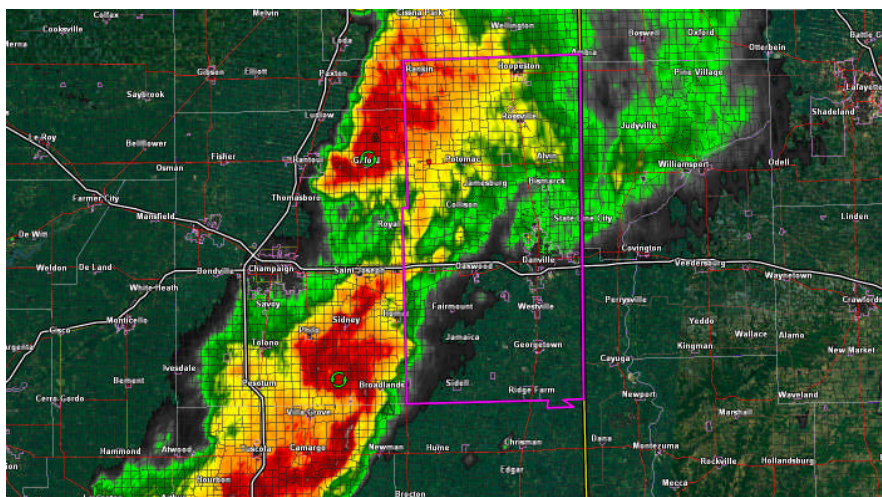
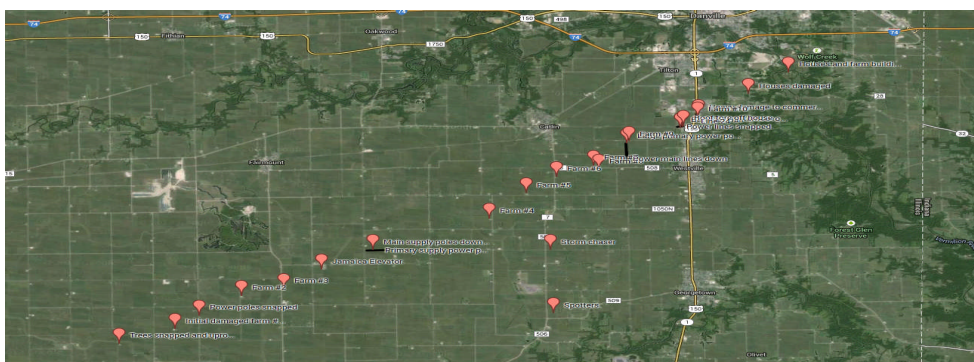


Rick Harper, Severe Weather Manager, was also monitoring extremely strong rotation in a storm in Northern Douglas / Southern Champaign County. At 12:55 pm, combined with the high winds of 60-70 plus mph associated with the entire storm complex about to enter the county, he considered the approaching storm to be life threatening and activated the warning sirens county wide.



3 minutes later, At 12:58 pm, the National Weather Service issued a tornado warning for the central part of Vermilion County. As sirens had already been activated 3 minutes earlier, sirens were not reactivated at this time.

### Damage Detail



The tornado was estimated to have touched down at 1:05 pm appr. 4 miles NW of Sidell near 300 E – 600 N. Here a garage was destroyed damaging 2 cars inside and also damaging a couple other outbuildings.

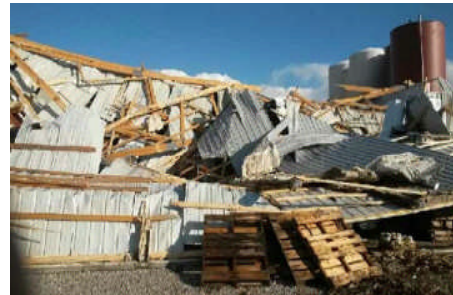
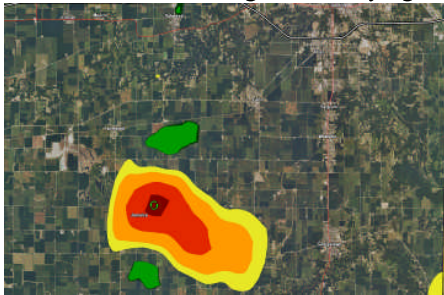
The next property damaged was near 500 E – 700 N roads where the roof was lifted off a house and numerous outbuildings were destroyed or damaged.



Next place damaged was on 600 East Rd where an out building was destroyed.



The tornado continued moving NE destroying a large building at the Jamaica Elevator.

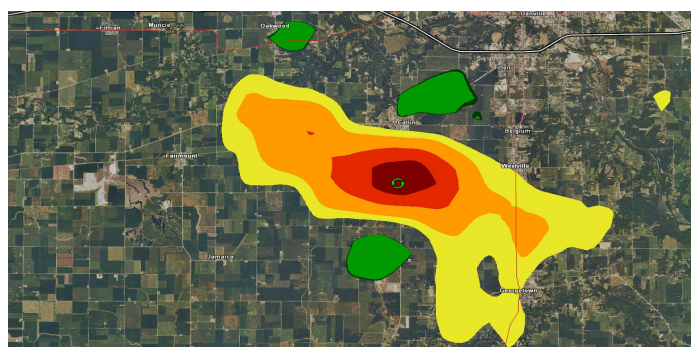


Tornado then snapped and downed a 1/2 - 3/4 mile section of main power supply lines near 800 E - 850 N roads.

As it continued NE, the next damaged property was on 1130 East Rd north of 1000 North Road where an outbuilding was destroyed.



Next farm hit was the most devastating as the entire farm on 1100 North Road was completely flattened. House plus 6 outbuildings, semi-truck-trailers, combine and other items all destroyed or heavily damaged. One minor injury occurred at this location.



Next, 2 garages were destroyed on Catlin-Indianola Road south of 1200 North Rd.



As the tornado continued NE, the next property found with damage was near the intersection of 1380 East – 1200 North. Here, a garage was destroyed as well as a grain bin.

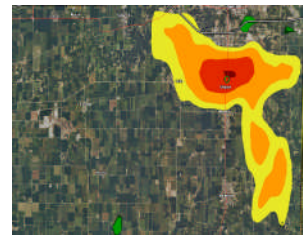


Next another ½ mile long section of main supply power lines were toppled south of 1300 North Rd.



On 1300 North Rd, just NE of the downed lines, 2 outbuildings were destroyed.

Continuing northeast the tornado next impacted the Belgium area on Lyons Road ripping roofs off, overturning a trailer and damaging many others as well as houses/garages and uprooting trees along with The Riggle banquet hall.



The tornado then crossed IL-Rt1/Georgetown Rd. causing considerable damage to a couple residences and commercial property on the east side of the highway between Belgium and Hegeler.

It continues through wooded areas briefly damaging some homes in the Highland Park – Murray Clark Roads area and finally damaging property on Grape Creek / Back Bone Road.

At this point, the tornado lifted before setting back down near Rileysburg, Indiana and continuing NE through Western Indiana.