



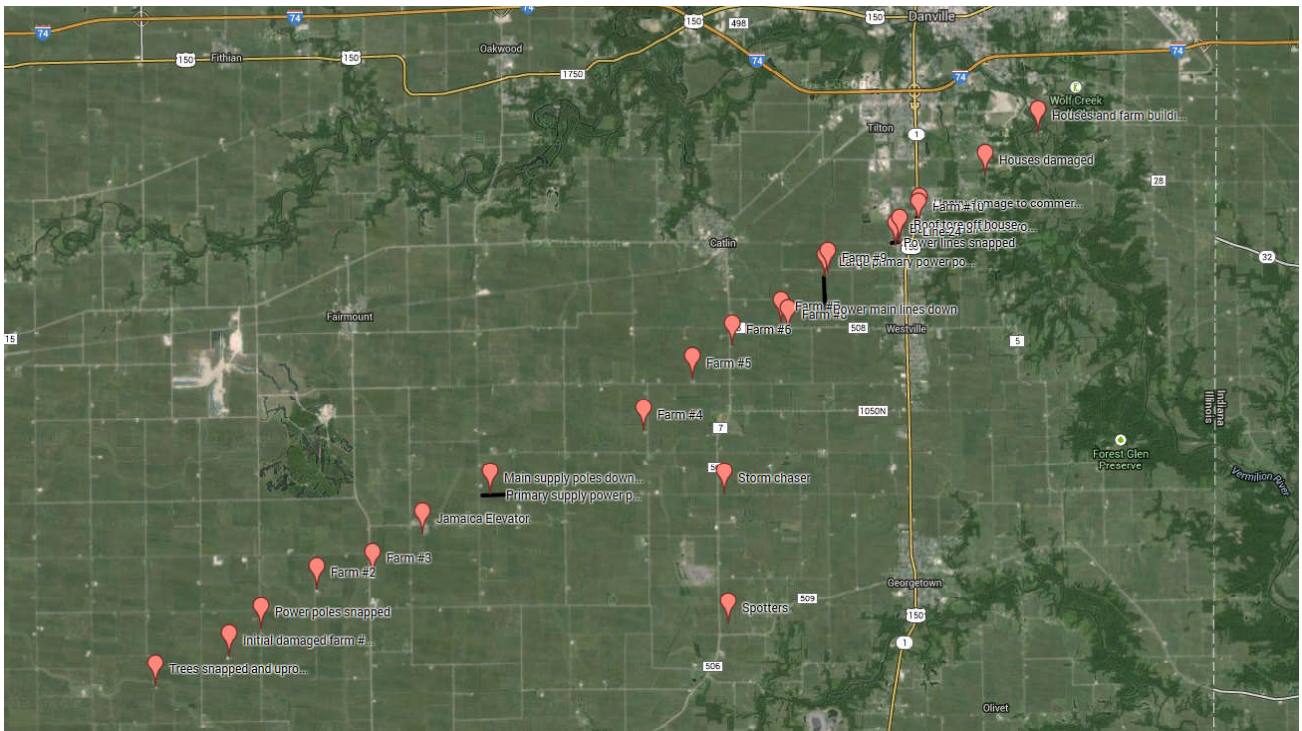
SEVERE WEATHER OPERATIONS

Vermilion County Illinois

Emergency Management Agency

Planning Today for Tomorrow's Emergencies

November 17th, 2013 Tornado Event



Southern Vermilion County Tornado Facts

RATING: EF-2
ESTIMATED PEAK WIND: 130 MPH
PATH LENGTH /STATUTE/: 18 MILES
PATH WIDTH /MAXIMUM/: QUARTER MILE
FATALITIES: 0
INJURIES: 1

START TIME: 105 PM CST
START LOCATION: 4 MILES NORTHWEST OF SIDELL

END TIME: 119 PM CST
END LOCATION: 4.5 MILES NORTHEAST OF WESTVILLE

EF SCALE: THE ENHANCED FUJITA SCALE CLASSIFIES
TORNADOES INTO THE FOLLOWING CATEGORIES.

EF0...WEAK.....65 TO 85 MPH
EF1...WEAK.....86 TO 110 MPH
EF2...STRONG....111 TO 135 MPH
EF3...STRONG....136 TO 165 MPH
EF4...VIOLENT...166 TO 200 MPH
EF5...VIOLENT...>200 MPH

NOTE:

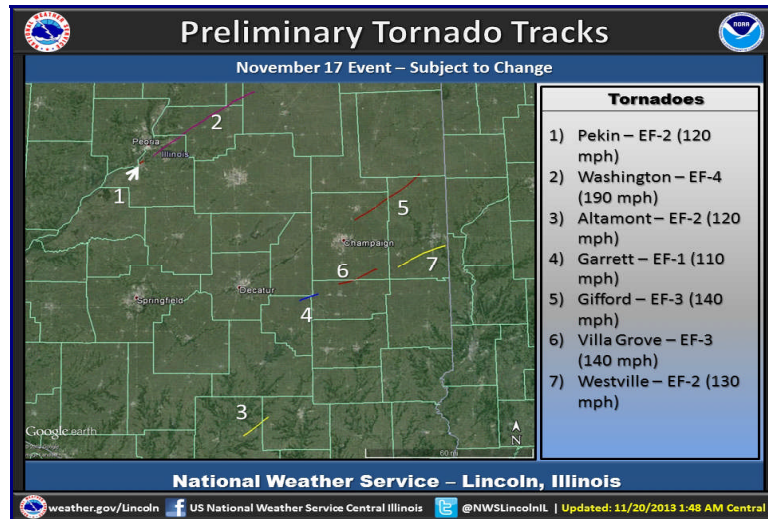
THE INFORMATION IN THIS STATEMENT IS PRELIMINARY AND SUBJECT TO
CHANGE PENDING FINAL REVIEW OF THE EVENTS AND PUBLICATION IN
NWS STORM DATA.



Setup

A major late-season severe weather outbreak occurred across the Midwest on Sunday, November 17. Many tornadoes were reported, especially across Illinois and Indiana, and wind damage occurred from the Mississippi River eastward as far as New Jersey and New York City.

In central Illinois, survey teams have evaluated 7 tornado tracks. A preliminary mapping of the tracks is below.



Timetable

The Vermilion County Emergency Management Agency opened its EOC early in the day (appr. 10 AM) and monitored the situation as it progressed throughout the day.

Over 30 spotters were dispatched from Hoopeston to Ridge Farm.

A tornado warning was issued at 12:50 pm for the northern part of the county, including the communities of Rankin, East Lynn, Rossville and Hoopeston. Sirens were activated immediately upon issuance at 12:50 pm for those areas. This is known now as the Gifford tornado that caused extensive damage to that community. It was assessed as an EF-3 tornado with a path that took it to the northeast entering Vermilion County appr. 4 miles northwest of Armstrong at 1:01 pm.

Continuing northeast, it passed appr. 2 miles south of East Lynn at 1:10 pm causing damage to 5-6 farms and knocking over dozens of power lines and trees. The tornado left the county near road 1130 East at appr. 1:15 pm.

NWS details of this tornado:

Rating:	EF-3
Peak wind:	140 mph
Touched down:	12:45 pm CST 2 miles east of Thomasboro (Champaign County)
Lifted:	1:15 pm CST 3.6 miles southwest of Wellington (Iroquois County)
Path length:	29.7 miles
Path width:	1/4 mile
Fatalities:	0
Injuries:	6